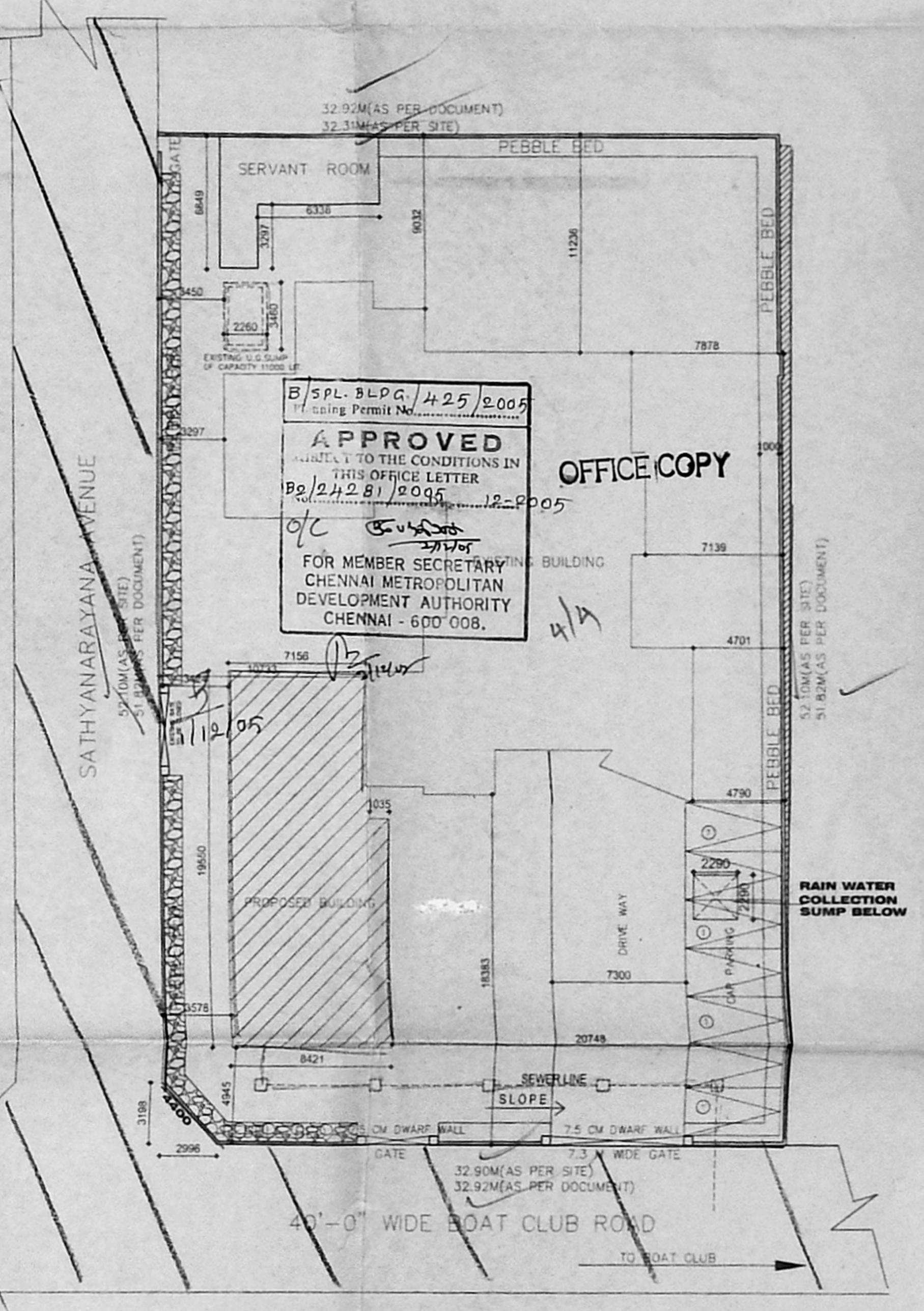
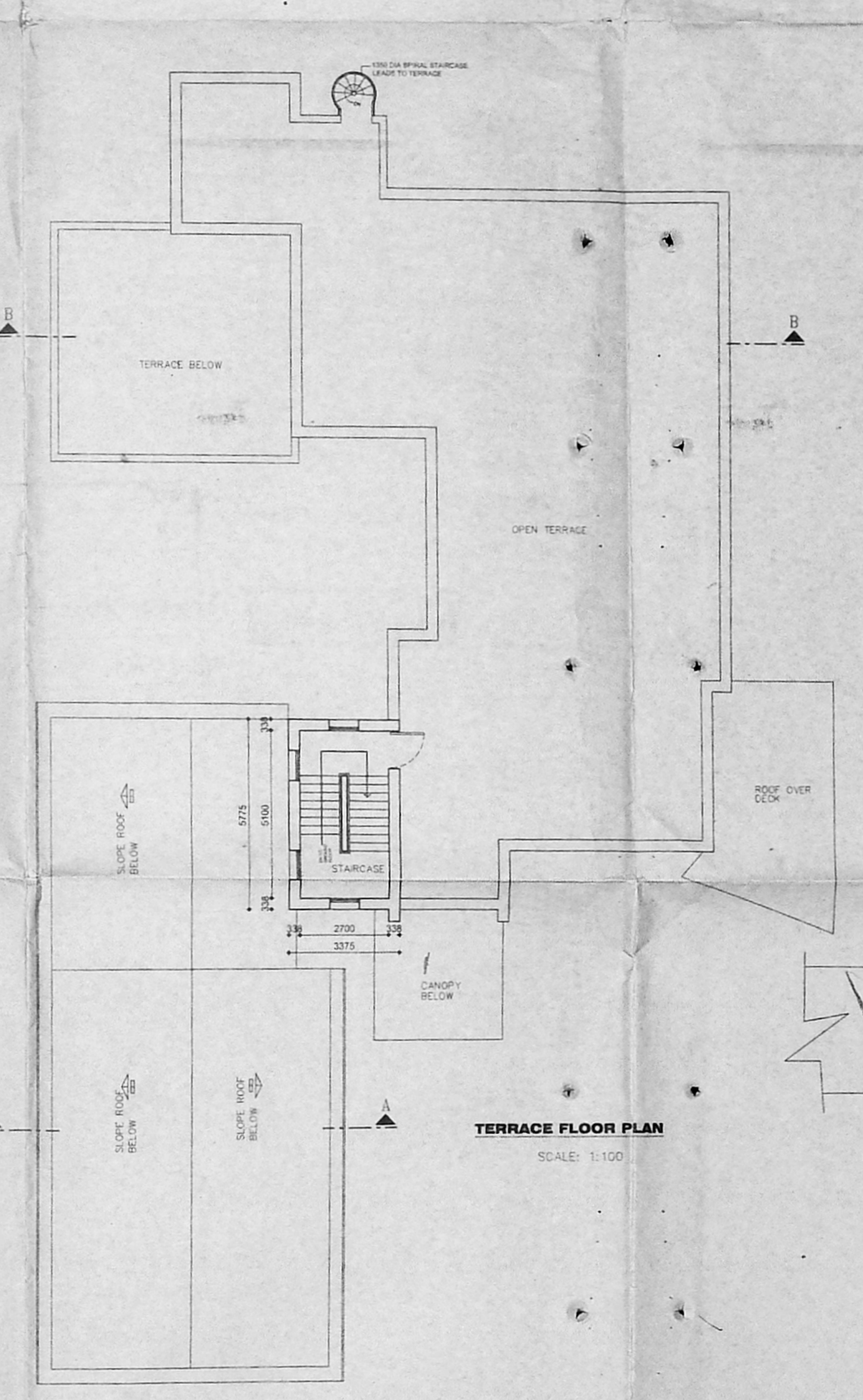
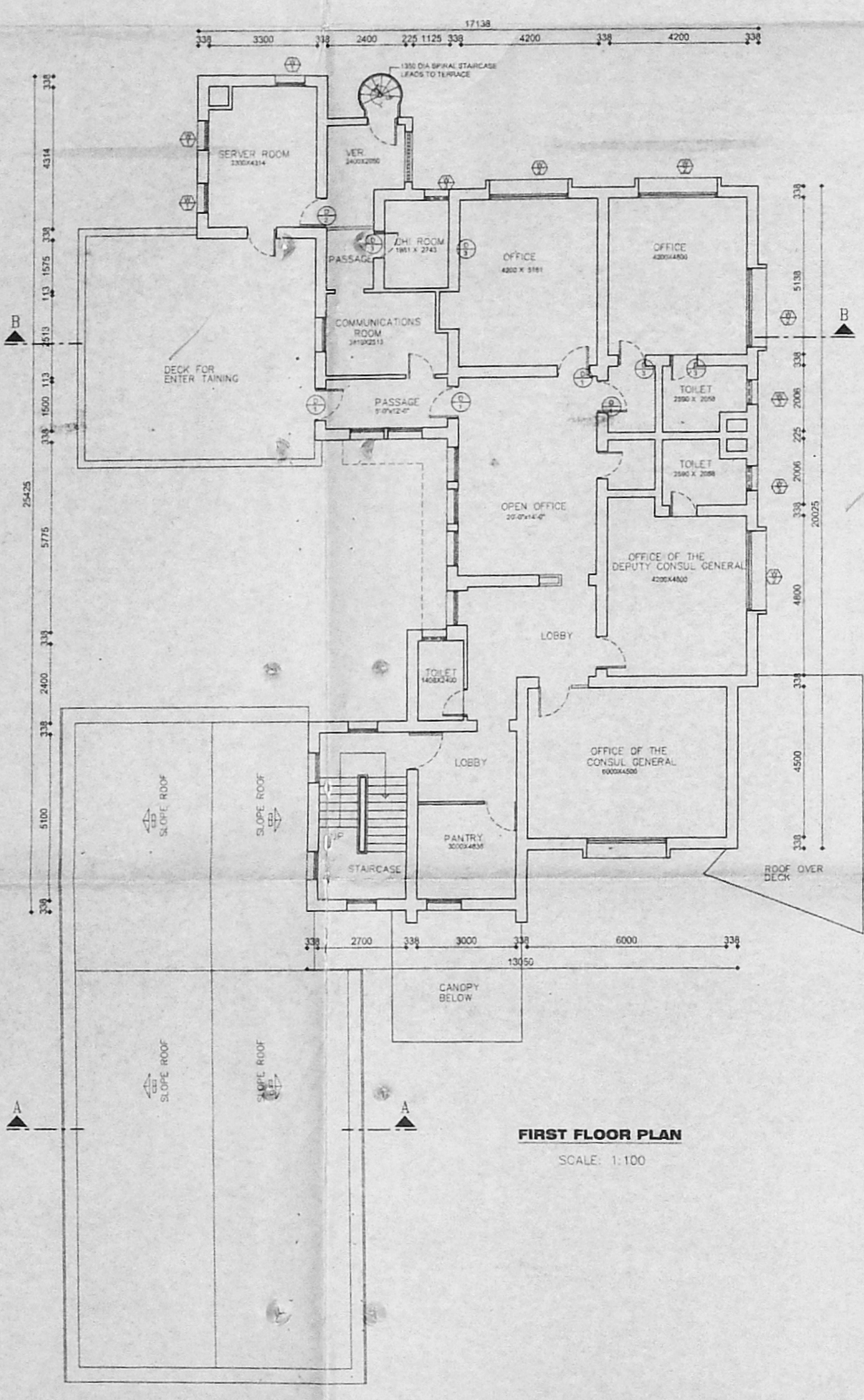
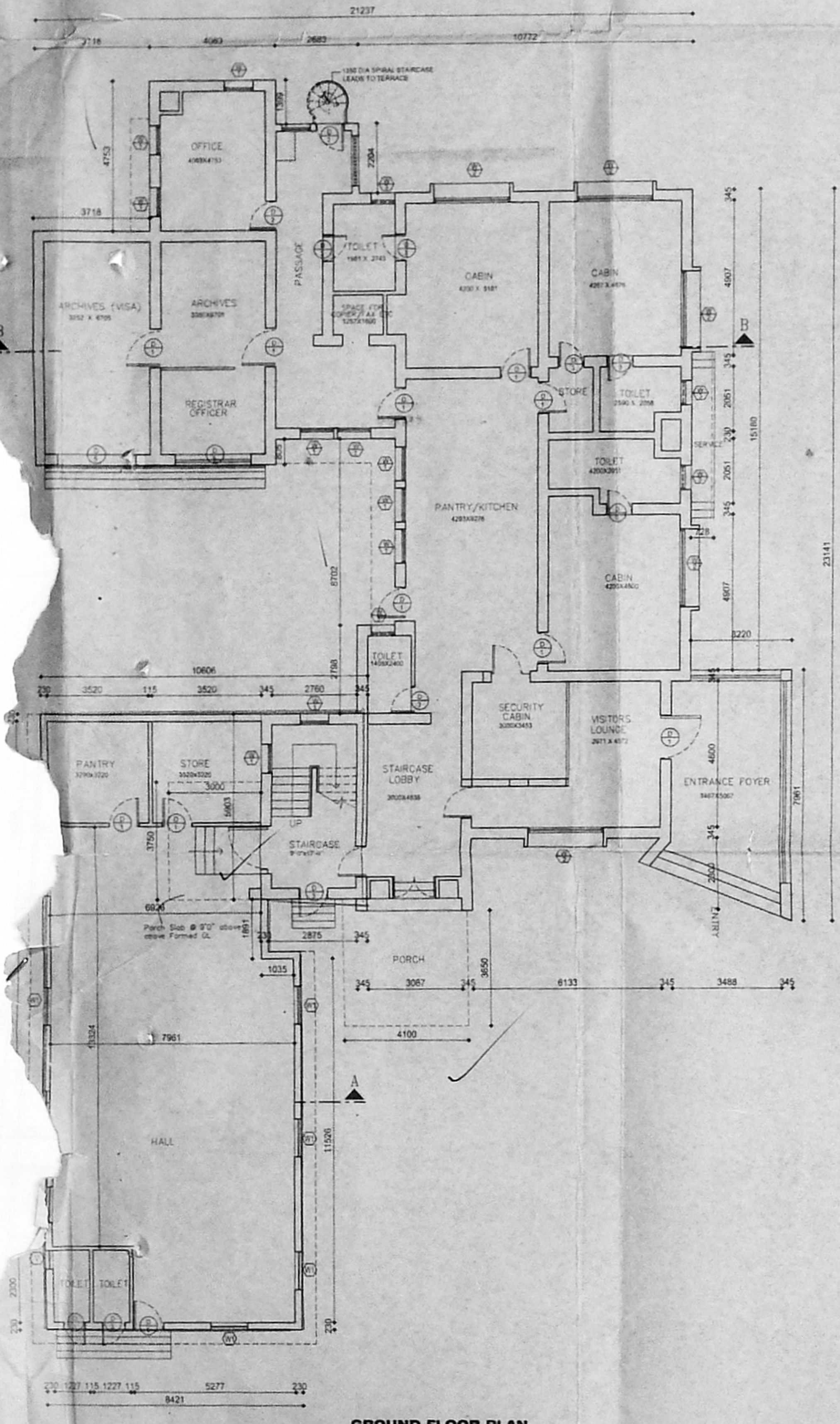


CMDA (B) No. 1
No. B2/24281/2005
Scrutiny 11/2/05
P. A.
A.P. D.P.

Revised Plan
Dt: 11/2/05



SCHEDULE OF JOINERY

TYPE	DESCRIPTION	SIZE	NO.
D	Door	4-0x7-0	
D1	Door	3-0x7-0	
D2	Door	3-0x7-0	
D3	Door	2-0x7-0	
D4	Door	8-0x7-0	
D5	Door	8-0x7-0	
D6	Door	8-0x7-0	
D7	Door	8-0x7-0	
D8	Door	8-0x7-0	
D9	Door	8-0x7-0	
D10	Door	8-0x7-0	
D11	Door	8-0x7-0	
D12	Door	8-0x7-0	
D13	Door	8-0x7-0	
D14	Door	8-0x7-0	
D15	Door	8-0x7-0	
D16	Door	8-0x7-0	
D17	Door	8-0x7-0	
D18	Door	8-0x7-0	
D19	Door	8-0x7-0	
D20	Door	8-0x7-0	
D21	Door	8-0x7-0	
D22	Door	8-0x7-0	
D23	Door	8-0x7-0	
D24	Door	8-0x7-0	
D25	Door	8-0x7-0	
D26	Door	8-0x7-0	
D27	Door	8-0x7-0	
D28	Door	8-0x7-0	
D29	Door	8-0x7-0	
D30	Door	8-0x7-0	
D31	Door	8-0x7-0	
D32	Door	8-0x7-0	
D33	Door	8-0x7-0	
D34	Door	8-0x7-0	
D35	Door	8-0x7-0	
D36	Door	8-0x7-0	
D37	Door	8-0x7-0	
D38	Door	8-0x7-0	
D39	Door	8-0x7-0	
D40	Door	8-0x7-0	
D41	Door	8-0x7-0	
D42	Door	8-0x7-0	
D43	Door	8-0x7-0	
D44	Door	8-0x7-0	
D45	Door	8-0x7-0	
D46	Door	8-0x7-0	
D47	Door	8-0x7-0	
D48	Door	8-0x7-0	
D49	Door	8-0x7-0	
D50	Door	8-0x7-0	
D51	Door	8-0x7-0	
D52	Door	8-0x7-0	
D53	Door	8-0x7-0	
D54	Door	8-0x7-0	
D55	Door	8-0x7-0	
D56	Door	8-0x7-0	
D57	Door	8-0x7-0	
D58	Door	8-0x7-0	
D59	Door	8-0x7-0	
D60	Door	8-0x7-0	
D61	Door	8-0x7-0	
D62	Door	8-0x7-0	
D63	Door	8-0x7-0	
D64	Door	8-0x7-0	
D65	Door	8-0x7-0	
D66	Door	8-0x7-0	
D67	Door	8-0x7-0	
D68	Door	8-0x7-0	
D69	Door	8-0x7-0	
D70	Door	8-0x7-0	
D71	Door	8-0x7-0	
D72	Door	8-0x7-0	
D73	Door	8-0x7-0	
D74	Door	8-0x7-0	
D75	Door	8-0x7-0	
D76	Door	8-0x7-0	
D77	Door	8-0x7-0	
D78	Door	8-0x7-0	
D79	Door	8-0x7-0	
D80	Door	8-0x7-0	
D81	Door	8-0x7-0	
D82	Door	8-0x7-0	
D83	Door	8-0x7-0	
D84	Door	8-0x7-0	
D85	Door	8-0x7-0	
D86	Door	8-0x7-0	
D87	Door	8-0x7-0	
D88	Door	8-0x7-0	
D89	Door	8-0x7-0	
D90	Door	8-0x7-0	
D91	Door	8-0x7-0	
D92	Door	8-0x7-0	
D93	Door	8-0x7-0	
D94	Door	8-0x7-0	
D95	Door	8-0x7-0	
D96	Door	8-0x7-0	
D97	Door	8-0x7-0	
D98	Door	8-0x7-0	
D99	Door	8-0x7-0	
D100	Door	8-0x7-0	

AREA STATEMENT

PLANT AREA	- 1701.67 SQ.M (18,310.00 SQ.FT)
EXISTING GROUND FLOOR AREA	- 370.35 SQ.M (3986.44 SQ.FT)
EXISTING FIRST FLOOR AREA	- 274.20 SQ.M (2951.48 SQ.FT)
PROPOSED GROUND FLOOR AREA	- 155.42 SQ.M (1671.94 SQ.FT)
TOTAL BUILT UP AREA	- 799.97 SQ.M (8610.87 SQ.FT)
TOTAL PLOT COVERAGE	- 37.87 %
TOTAL FSI	- 0.47

NO. OF CARS PROVIDED - 7

NORTH POINT

COLOUR INDICATION:

- PROPOSED BUILDING
- PLOT BOUNDARY
- ROAD ACCESS
- SEWER LINE

OWNER'S SIGNATURE

LICENSED SURVEYOR

nataraj & venkat associates
Architects
"Oxford Centre"
No. 62, C.P. Ramaswamy Road,
Alwarpet,
Chennai - 600 018
Tel: 2499 74 65 1262 x 81

PLAN SHOWING THE EXISTING RESIDENTIAL BUILDING WITH ADDITIONAL CONSTRUCTION OF GROUND FLOOR (PART) FOR THE TEMPORARY OCCUPATION FOR TWO YEARS BY THE OFFICE OF THE CONSULATE GENERAL OF THE FEDERAL REPUBLIC OF GERMANY, AT DOOR NO. 9 (NEW) NO. 6 (OLD), PLOT NO. 15, SATHYANARAYANA AVENUE IN R.S. NO. 3900, BOAT CLUB ROAD, CHENNAI.

OWNER'S SIGNATURE
[Signature]

LICENSED SURVEYOR
[Signature]

A. VENKAT. B. ARCH.
ARCHITECT LICENSED SURVEYOR
CLASS 1 No. R.A. 41,
62, C.P. RAMASWAMY ROAD,
ALWARPET, CHENNAI - 600 018.
TEL. NO. 24997465, 24974406